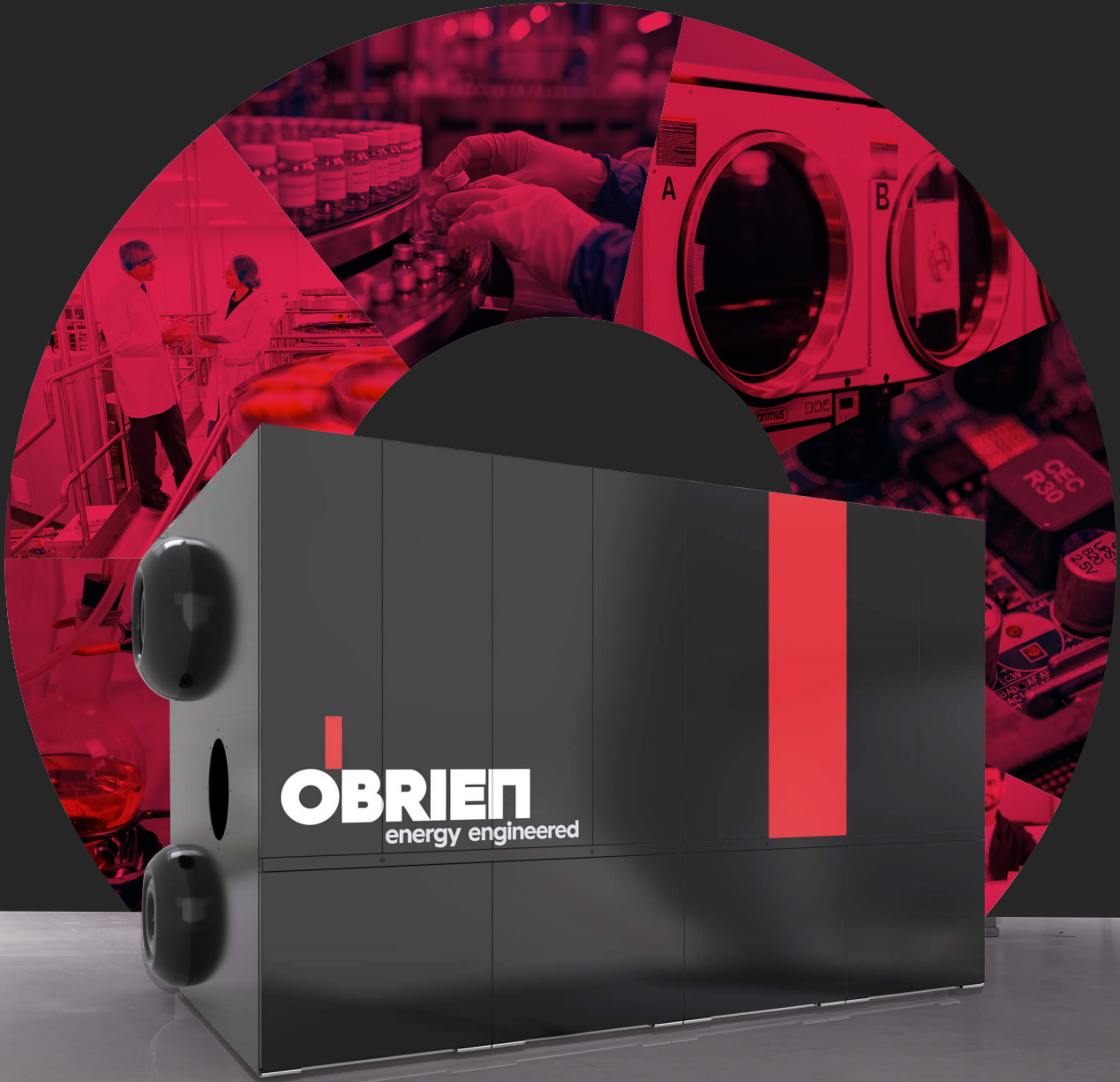


**OBRIEN**



**OBV-88**

# Watertube Steam Boiler

Efficient, Reliable, Built to Last



OBV-88

# Watertube Steam Boiler

O'Brien and Australian engineered. Longitudinal 2-drum, D-type chamber combustion. 4–25 t/h steam. 12.5–25 bar. Bigger capacities available on request.

**4-25 t/h**

Steam Production

**16 MW**

Max Capacity

**25 bar**

Max Pressure

**Australian**

Engineered

## Design Features



### 2-Drum D-Type Body

Longitudinal · Flexible chassis supports · Lateral expansion



### Membrane Cooling Walls

Sealed · No smoke leakage · Micro-positive pressure combustion



### Manholes & Check Doors

Upper and lower drums · Rear access · Prevents vaporisation



### Silicate Fibre Insulation

Furnace temp under 45°C · Efficient heat loss control



### Vibration-Proof Fasteners

High temp convection tubes — prevents pipe fracture



### CNC Machined Components

Steel tubes · Circling · Drilling — reduces assembly stress



### Cr25Ni20 Steel Membrane

Between furnace and convection tubes · No refractory needed



### Spiral Finned Economiser

Flue gas to economiser before chimney discharge

Lower carbon, lower cost, higher reliability — through engineered energy systems.

# Technical Specifications

## Model Breakdown

Model	Steam (t/h)	Capacity (MW)	Pressure (bar)	Water (m <sup>3</sup> )	Volume (m <sup>3</sup> )	Dimensions L x W x H (mm)	Weight (t)
<b>OBY-88 4</b>	4	2.5	12.5/16/25	5.9	7.8	6175 × 2950 × 3110	22
<b>OBY-88 6</b>	6	4	12.5/16/25	6.6	9.8	6450 × 3350 × 3460	33
<b>OBY-88 8</b>	8	5	12.5/16/25	9.8	6.6	6910 × 3150 × 3450	36
<b>OBY-88 10</b>	10	6	12.5/16/25	8.5	11.8	7590 × 3660 × 3680	39
<b>OBY-88 15</b>	15	9	12.5/16/25	11	14.5	8400 × 3690 × 3670	44
<b>OBY-88 20</b>	20	13	12.5/16/25	11.5	14.7	8400 × 3960 × 3900	48
<b>OBY-88 25</b>	25	16	12.5/16/25	12.3	16.1	9200 × 3960 × 3900	51

\* Bigger capacities and higher pressures available on request

## Operating Parameters

Performance	
Steam Production Range	<b>4-25 t/h</b>
Nominal Capacity Range	<b>2.5-16 MW</b>
Design Pressure	<b>12.5 / 16 / 25 bar</b>
Extended Capacity	<b>Available on request</b>
Construction	
Boiler Type	<b>Longitudinal 2-Drum · D-Type combustion chamber</b>
Furnace Insulation	<b>High-Class silicate fibre · Max 45°C surface temp</b>
Membrane Wall Material	<b>Cr25Ni20 Stainless Steel</b>
Combustion Chamber	<b>Membrane Water Cooling · Micro-Positive Pressure</b>
Manufacturing	<b>CNC Machined · Australian Engineered</b>

# Delivered & Commissioned

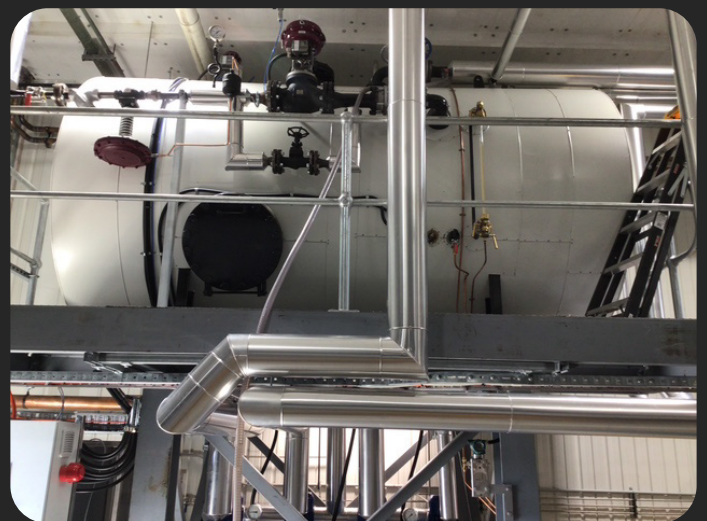
---



*Ensign 4MW OBY-88  
at Adelaide, SA*



*Nyrstar 2 x 15MW OBY-88  
at Hobart, TAS*



*Primo 2 x 6 MW OBY88  
at Chullora, Sydney NSW*

# Why O'Brien?

---

- **Australia's Largest**

Leading supplier of industrial boilers across Australia

- **20+ Years Experience**

Decades of engineering expertise in steam & hot water systems

- **24/7 Support**

Around the clock support with instant phone assistance

- **Accredited Training**

RTO Code 45484, boiler operation training nationwide

- **Tailored Solutions**


Custom engineered, with no off the shelf compromises


- **765+ Active Clients**


Trusted across Australia and internationally

Ready to engineer your energy solution?

Connect with us at

 1300 771 759

 [obrien-energy.com.au](http://obrien-energy.com.au)

 [sales@obrien.energy](mailto:sales@obrien.energy)

Follow us on:

